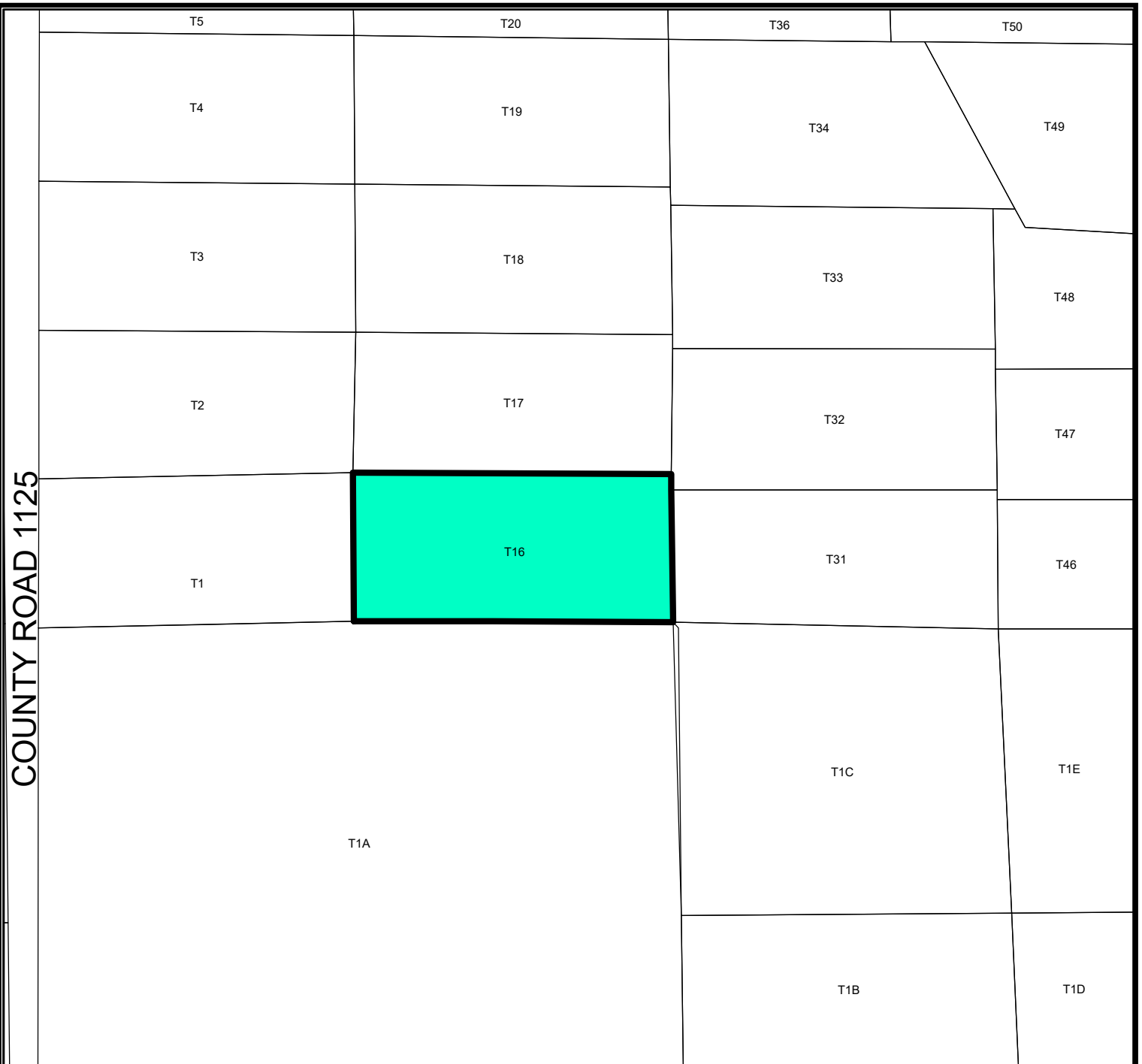


COUNTY ROAD 1125



LOCATION MAP




SUB-21-0432

Scale: 1" = 200'

Proposed Plat of Shenandoah Bar M Ranch, Section 2 being a replat of Tract 16, Shenandoah Bar M Ranch, Midland County, Texas.

Generally located northwest of the intersection of N. County Road 1123 and E. County Road 59.
(Extraterritorial Jurisdiction)

LEGEND

-  CITY LIMITS
-  PARCEL
-  PRIVATE BLDGS

