

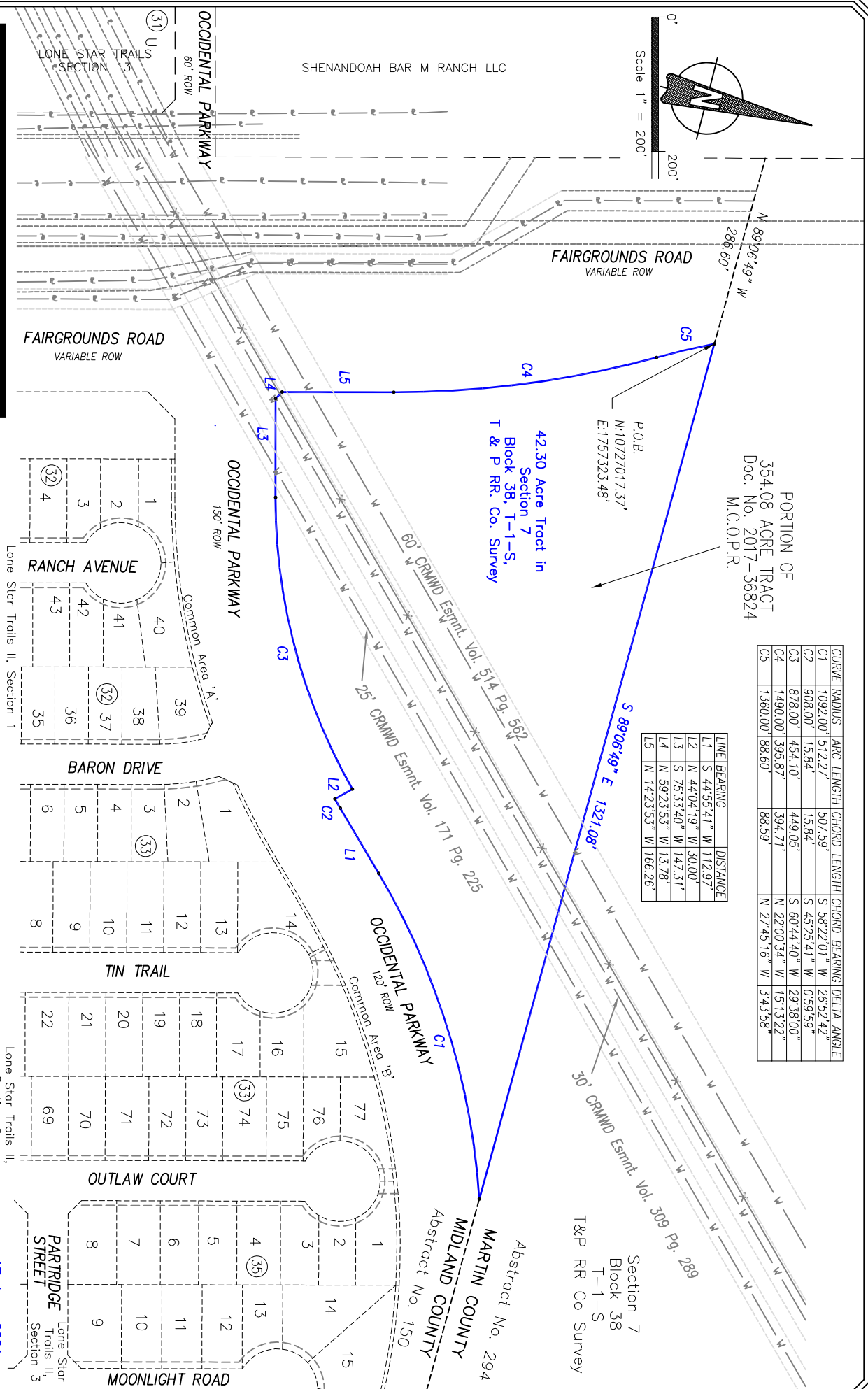
PORTION OF
354.08 ACRE TRACT
Doc. No. 2017-36824
M.C.O.P.R.

CURVE	RADIUS	ARC LENGTH	CHORD LENGTH	CHORD BEARING	DELTA ANGLE
C1	1092.00'	512.27'	507.59'	S 58°22'01" W	26°52'42"
C2	908.00'	15.84'	15.84'	S 45°25'41" W	0°59'59"
C3	878.00'	454.10'	449.05'	S 60°44'40" W	29°36'00"
C4	1490.00'	395.87'	394.71'	N 22°00'34" W	15°13'22"
C5	1360.00'	188.60'	88.59'	N 27°45'16" W	3°43'58"

LINE	BEARING	DISTANCE
L1	S 44°55'41" W	112.97'
L2	N 44°04'19" W	30.00'
L3	S 75°33'40" W	147.31'
L4	N 59°23'53" W	13.78'
L5	N 14°23'53" W	166.26'

42.30 Acre Tract in
Section 7
Block 38, T-1-S,
T & P RR. Co. Survey

Section 7
Block 38
T-1-S
T&P RR Co Survey



ZONING EXHIBIT
9.70 ACRE TRACT IN
SECTION 7, BLOCK 38, T-1-S,
T&P RR Co SURVEY,
CITY & COUNTY OF MIDLAND, TEXAS.

Professional Land Surveying & Mapping
Aaron Burrell Land Surveyors, LLC
TBPLS Firm No. 10194217
415 W. Wall St., Suite 204 P.O. Box 81041
Midland, Texas 79701 Midland, Texas 79708
432-848-4439
www.asbsurveyors.com
Page 1 of 2
LSTII Zoning TH

17 June 2021